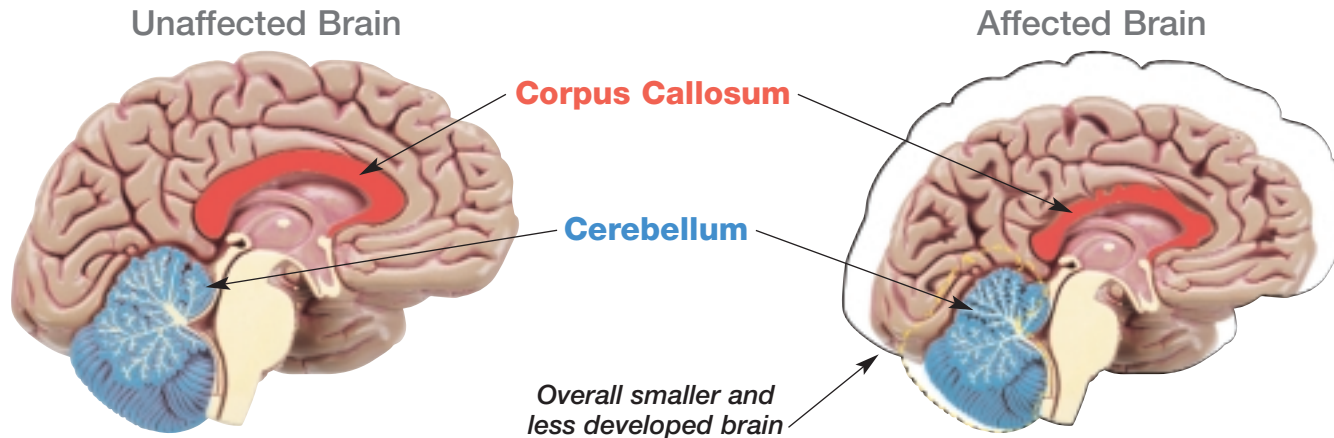


# Brain Structures Most Sensitive to Prenatal Alcohol Exposure



Brain Structure	Function	Prenatal alcohol exposure may result in problems with:
Corpus Callosum	Communicates motor, sensory and cognitive information between the two hemispheres of the brain	Storing and retrieving information, problem solving, attention and verbal memory
Cerebellum	Processes input from other areas of the brain to coordinate motor and cognitive skills	Controlling movements, maintaining balance and fine motor skills

National Organization on Fetal Alcohol Syndrome (NOFAS)  
1.800.66NOFAS or visit [www.nofas.org](http://www.nofas.org)

